



MEDICATION MANAGEMENT PHARMACY

PRESCRIPTION MEDICATION

Is A Patient's Biggest Responsibility

Up to 30% of prescriptions are never filled.

Over 50% of medications are not taken as prescribed.

In the Medicare Population:

- 81% have 2+ chronic conditions.
- Over 70% are non-adherent to their medication
- 1 in 5 are readmitted within 30 days – half of them are considered to be non-adherent.

The chronically ill and aging are overwhelmed with their pharmacy care.



THESE GAPS HAVE RIPPLING EFFECTS



Hospitals:

Up to 10% of admissions are considered preventable due to non-adherence.



Primary Care Physicians:

Limited physicians and time to consult patients or provide team-based care, resulting in poor communication between in-patient and out-patient teams.



Acute-Care Facilities:

A revolving door plagued with readmissions.



Payors:

Struggle to find the members who need help, few who are found continue with care.



In-Home Providers:

The pieces of the continuum of care puzzle are left to social workers, aids, nurses, and case managers who are forced into making ill-informed care decisions.



While this goes on,
the patient
continues a non-
adherent path, while
caregivers become
just as overwhelmed.

WHAT IF A PHARMACY FOUND A WAY TO CLOSE THOSE GAPS?



Patients know that medicines keep them alive.

4 out of 5

patients state that they would skip their PCP appointment over picking up their medications.



Centennial Pharmacy Services utilizes an accessible, clinically-based workflow for patients and health teams, proving that pharmacy care is the key to patient success.

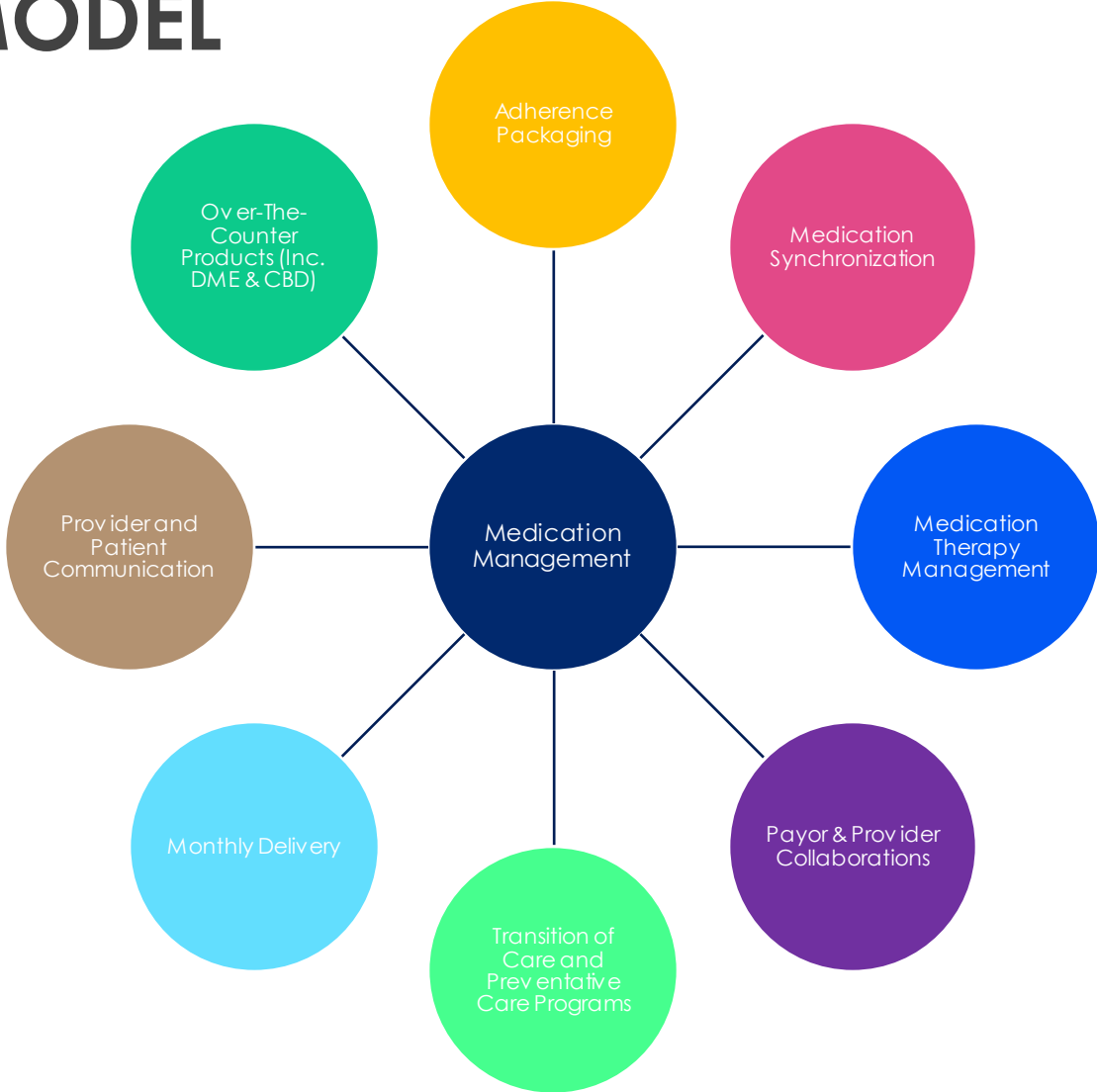
Essential Functions of the Centennial platform:

- Clinical pharmacy initiatives
- Clinical pharmacist support
- Coordination of care
- Improved dispensing systems
- Proprietary management systems
- Scalability with care teams
- Quality metric goals analysis and support

THE CENTENNIALCARE® MODEL

This service model provides Centennial's patients, providers and partners with comprehensive and effective medication management.

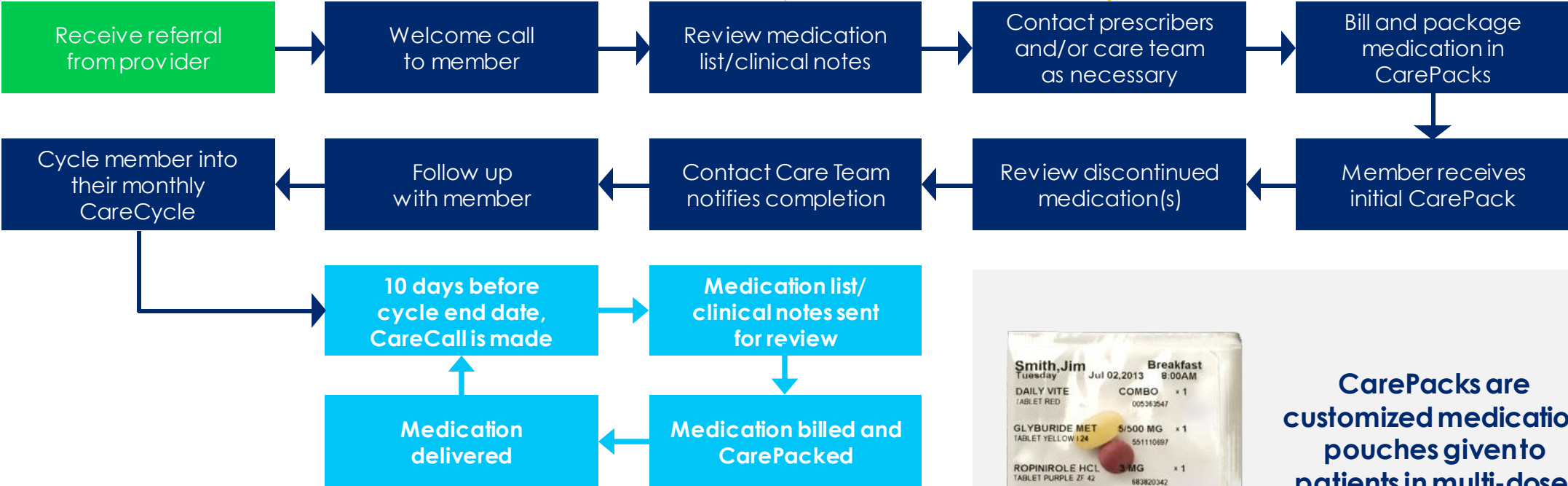
- ✓ Enables Centennial to maximize and diversify pharmacy services
- ✓ Creates higher outcomes and cost savings for partners
- ✓ Provides patients with easy, accessible, and affordable pharmacy care



THE PROCESS

- Medication interactions
- Drug utilization
- Regimen optimization
- Brand/Generic ratio
- Insurance/Copayment assistance
- Polypharmacy issues

Member has medication change or hospitalization



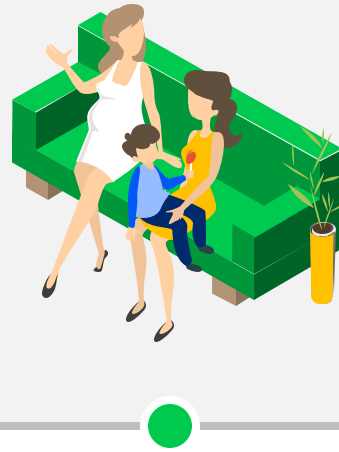
CarePacks are customized medication pouches given to patients in multi-dose, time-stamped packages.

THE EXPERIENCE



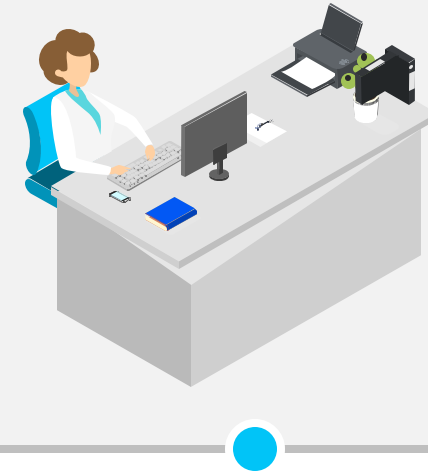
The Partner

- Easy referral process customized to workflow
- Clinical pharmacy team reviews all medications
- Follow-up and collaboration with Centennial



The Patient

- Medications synchronized to one day and delivered in 7-, 14-, or 28-day increments
- Easy medication packaging
- Updated medication list provided with each delivery
- Streamlined copayment options



The Care Team

- One point of contact regarding medications
- Confidence in pharmacy care

Centennial provides you a custom pharmacy program suited to your needs.

THE DATA

Primary: Medicare Advantage Plan
Secondary:

Sync Start Date:
Sync Status: Enrolled

Drug	Compliance				
	Gap	Median	Average	Latest	History
Insulin Response Enhancers – Thiazolidinediones (PPAR-gamma) • Pioglitazone Hcl 15 Mg Tablet –	0	100%	102%	100%	
Angiotensin II Receptor Blockers (ARBs) • Losartan Pot Tab 100mg –	0	100%	102%	100%	
Antihyperlipidemic – HMG CoA Reductase Inhibitors (statins) • Pravastatin 40mg Tab –	0	100%	102%	100%	
Asthma Therapy – Inhaled Corticosteroids (Glucocorticoids) • Flovent Disk Aer 250mcg –	0	107%	126%	107%	
Cardiac Selective Beta Blocker-Thiazide Diuretic and Related • Bisoprol/Hctz Tab 5-6.25mg –	0	100%	102%	100%	
Calcium Channel Blockers – Dihydropyridines • Amlodipine Besylate 10 Mg Tab –	0	100%	102%	100%	
Platelet Aggregation Inhibitors – Salicylates • Asa Low Dose 81mg Ec Tab –	0	100%	102%	100%	
Minerals and Electrolytes – Calcium Replacement/Vitamin D • Calcium 600-Vit D3 200 Tablet –	0	100%	102%	100%	

Other Issues:
 Elderly (HRM): No High Risk Medications

ACEI/ARB: Taking
 STATIN: Taking

Primary: Medicare Advantage Plan
Secondary:

Sync Start Date:
Sync Status: Enrolled

Drug	Compliance				
	Gap	Median	Average	Latest	History
Antihyperglycemic – Sulfonylurea Derivatives • Glipizide 5mg Tab –	0	90%	82%	112%	
Antihyperglycemic – Dipeptidyl Peptidase-4 (DPP-4) Inhibitors • Januvia 50 Mg Tablet –	0	90%	82%	112%	
Diuretic – Loop • Furosemide 80mg Tab –	0	122%	98%	500%	
Diuretic – Thiazides and Related • Metolazone 500mg Tab –	0	106%	110%	112%	
Antihistamines – 2 nd Generation • Levocetirizine 5 Mg Tablet –	0	106%	110%	112%	
Gastric Acid Secretion Reducing Agents – Proton Pump Inhibitors • Dexilant 60mg –	0	106%	110%	112%	
Vitamins – D Derivatives • Vitamin D 2000iu Tab –	0	106%	110%	112%	
Minerals and Electrolytes – Iron • Ferrous Sulfate 325 Mg Tablet –	0	106%	110%	112%	
Beta Blockers Cardiac Selective • Metoprolol 25mg –	0	90%	82%	112%	
Antidepressant – Serotonin-2 Antagonist-Reuptake Inhibitors • Trazodone 50mg Tab –	0	100%	106%	112%	
Dermatological – Glucocorticoid • Triamcinolon 0.1% Cre –	0	47%	47%	47%	
Calcium Channel Blockers – Benzothiazepines • Diltiazem Er 240 Mg Capsule –	0	106%	110%	112%	
Diuretic – Aldosterone Receptor Antagonist, Non-selective • Spironolactone 25 Mg Tablet –	0	106%	110%	112%	
Minerals and Electrolytes – Potassium, Oral • Pot Chloride 10meq Cr Tab –	0	140%	124%	112%	
Platelet Aggregation Inhibitors – Salicylates • Asa Low Dose 81mg Ec Tab –	0	106%	110%	112%	
Rifamycins and Related Derivative Antibiotics • Xifaxan 550mg Tabs –	0	112%	111%	112%	
Thyroid Hormones – Synthetic T4 (Thyroxine) • Synthroid 100mcg Tab –	0	90%	82%	112%	

Other Issues:
 Elderly (HRM): No High Risk Medications

ACEI/ARB: Not Taking
 STATIN: Not Taking

THE DATA



Patient A, November 2020

Patient Risk Score  96 – VH (Very High Risk)

Last Update: 11/8/2020

Hospitalization Patient Risks

30 Day Hospitalization  Very High Risk for hospitalization within next 30 days

12 Month Hospitalization  Very High Risk for hospitalization within next 12 months

Drug Therapy Problems

Therapeutic DTP  Very High Therapeutic consideration-related drug therapy problem

Adherence DTP  Very High Adherence-related therapy problem

Discrepancy DTP  Very High Discrepancy-related therapy problem



Patient A, July 2021

Patient Risk Score  21 – VL (Very Low Risk)

Last Update: 7/8/2021

Hospitalization Patient Risks


30 Day Hospitalization  Very Low Risk for hospitalization within next 30 days

12 Month Hospitalization  Low Risk for hospitalization within next 12 months

Drug Therapy Problems

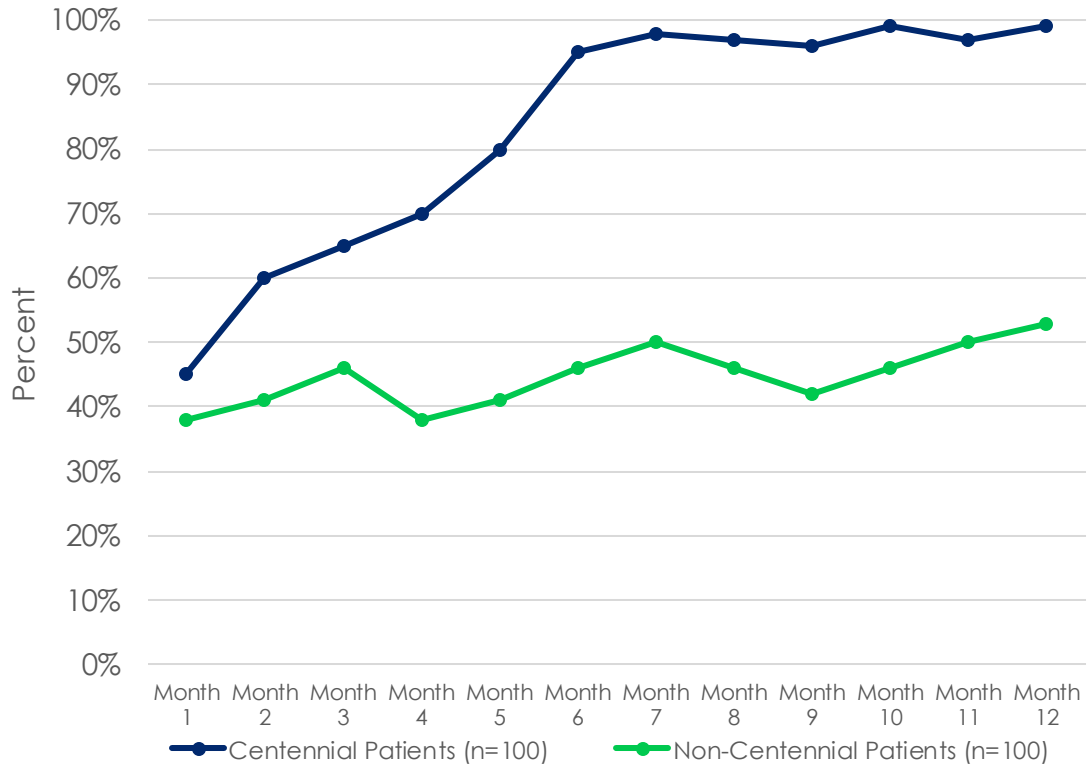
Therapeutic DTP  Very Low Therapeutic consideration-related drug therapy problem

Adherence DTP  Very Low Adherence-related therapy problem

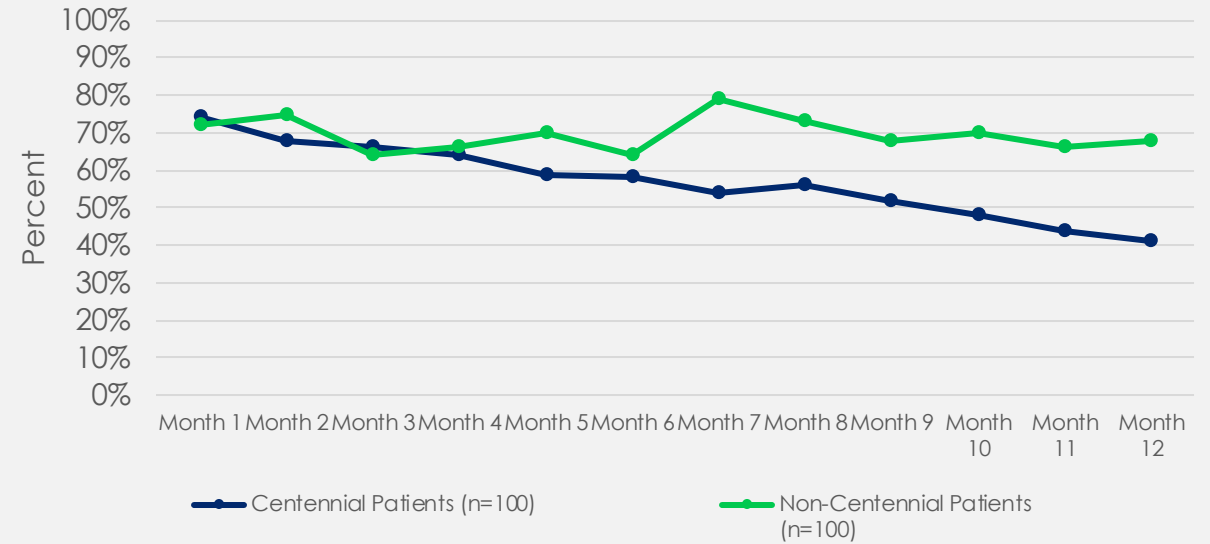
Discrepancy DTP  Very Low Discrepancy-related therapy problem

THE DATA

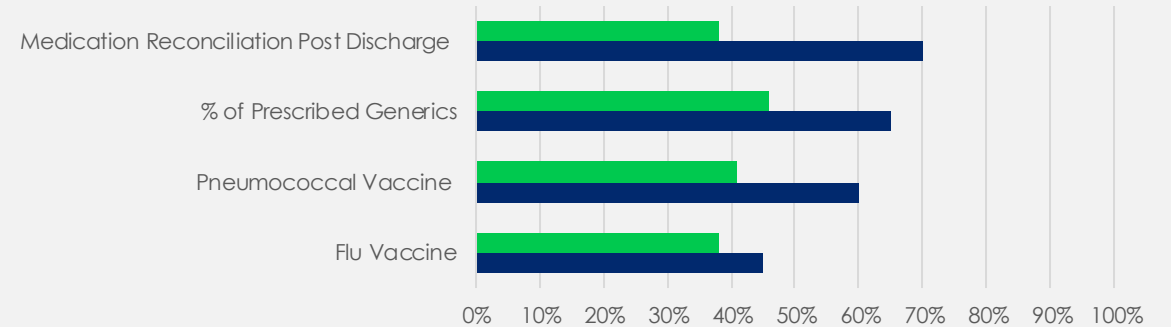
Medication Adherence February 2017 – February 2018



Re-Hospitalizations February 2017 – February 2018



PCP Measured Achievements



n=100 Medicare Advantage Patients Over 1 Year

THE OUTCOMES

EQuIPP Star Ratings

2022 YTD

76%
renewed prescription
rate from prescriber

20%
average

98%
medication
adherence rate

30%
average

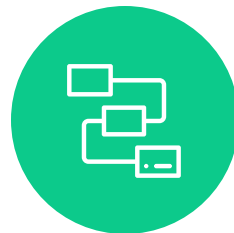
Measure	Pharmacy	Versus Goal		Versus Others	
	Performance Score	Goal	Gap	Organization Average	State Average
Cholesterol PDC	93.4% ANALYZE PERFORMANCE	87% ↑ HIGHER IS BETTER	✓ OUTLIERS	90.7%	93.8%
Diabetes PDC	100% ANALYZE PERFORMANCE	82% ↑ HIGHER IS BETTER	✓	89.9%	93%
High-risk Medications	3.6% ANALYZE PERFORMANCE	5% ↓ LOWER IS BETTER	✓ OUTLIERS	11.4%	8.8%
RASA PDC	96.2% ANALYZE PERFORMANCE	84% ↑ HIGHER IS BETTER	✓ OUTLIERS	91%	94.1%
SPC: Received Statin Therapy	100% ANALYZE PERFORMANCE	84% ↑ HIGHER IS BETTER	✓	78.7%	79%
Statin Use in Diabetes	98.3% ANALYZE PERFORMANCE	84% ↑ HIGHER IS BETTER	✓ OUTLIERS	78.9%	79.4%

THE CENTENNIAL DIFFERENCE

Centennial Pharmacy Services has turned pharmacy care into a **medication management model that helps care teams succeed**



Partner with teams within the care continuum to enhance quality metrics and manage high-risk patient's care



Streamlined workflow, and integrated technologies will help Centennial put you ahead of the pack

PARTNERSHIP PROGRAMS

Referral Relationship

Centennial Current Status

Patients identified by Care Team and sent to Centennial via e-mail, phone, or online portal

- ✓ Comprehensive Medication Reviews and Med. Sync
- ✓ Free delivery
- ✓ Copayment Optimization
- ✓ Education to necessary teams
- ✓ Data as requested up to 2 times per year

Collaborative Alliance

Joint approach at determining metric goals and identifying patients

Centennial works with your team to set goals, analyze gaps, identify patients, and roll out to teams

- ✓ Referral Relationship and:
 - ✓ Dedicated Centennial Success Manager to work with your team to identify goals, patients, rollout, etc.
- ✓ Data as requested up to 12 times per year
- ✓ Minimum 250 patients
- ✓ Partnership review at 1,000 patients

Integrated Partnership

Dedicated Pharmacy Support

Enhanced Centennial support

- ✓ Referral Relationship + Collaborative Alliance and:
 - ✓ Dedicated team consisting of a minimum of 1 clinical pharmacist and 1 CPhT
- ✓ Dedicated Centennial Resource Portal with documents specific for your patients
- ✓ Minimum 500 patients
- ✓ \$9.00 PPPM (First 500 patients are \$0)

Embedded Partnership

Centennial Pharmacists at Practices

Highest level of Centennial support

- ✓ Referral Relationship + Collaborative Alliance + Integrated Partnership and:
 - ✓ Dedicated team of pharmacists and/or CPhT embedded with specific practices or rolls at
- ✓ Minimum 1,000 patients
- ✓ \$1,000 Onboarding fee per team member + \$12.00 PPPM (First 1000 patients are \$0)

TIMELINE OF CENTENNIALCARE

2-14 Days

- Identify type of relationship
- Set up organization email/SLACK access
- Set up any account access
- Workflow approvals

15-30 Days

- Team Education
- Pharmacist onboarding (if applicable)
- Patient Identification
- Patient Onboarding Begins

30-90 Days

- Patient Identification, Onboarding & Team Education
- Weekly/Biweekly meetings
- Workflow reassessments
- First Data Pull 30 Days after first 150 patients

Ongoing

- Monthly Check-Ins
- Data Analysis
- On-boarding
- Team Education
- Workflow Reviews
- Communication

THE CHRONICALLY ILL AND AGING IN PLACE NEED ENHANCED PHARMACY CARE



Centennial Pharmacy Services is the gold standard of pharmacy care for providers, payors, and patients

Let's better patient care, together.



THANK YOU

Lindsay Dymowski

L.DYMOWSKI@CENTENNIALPHARMACY.COM – 215-850-9552